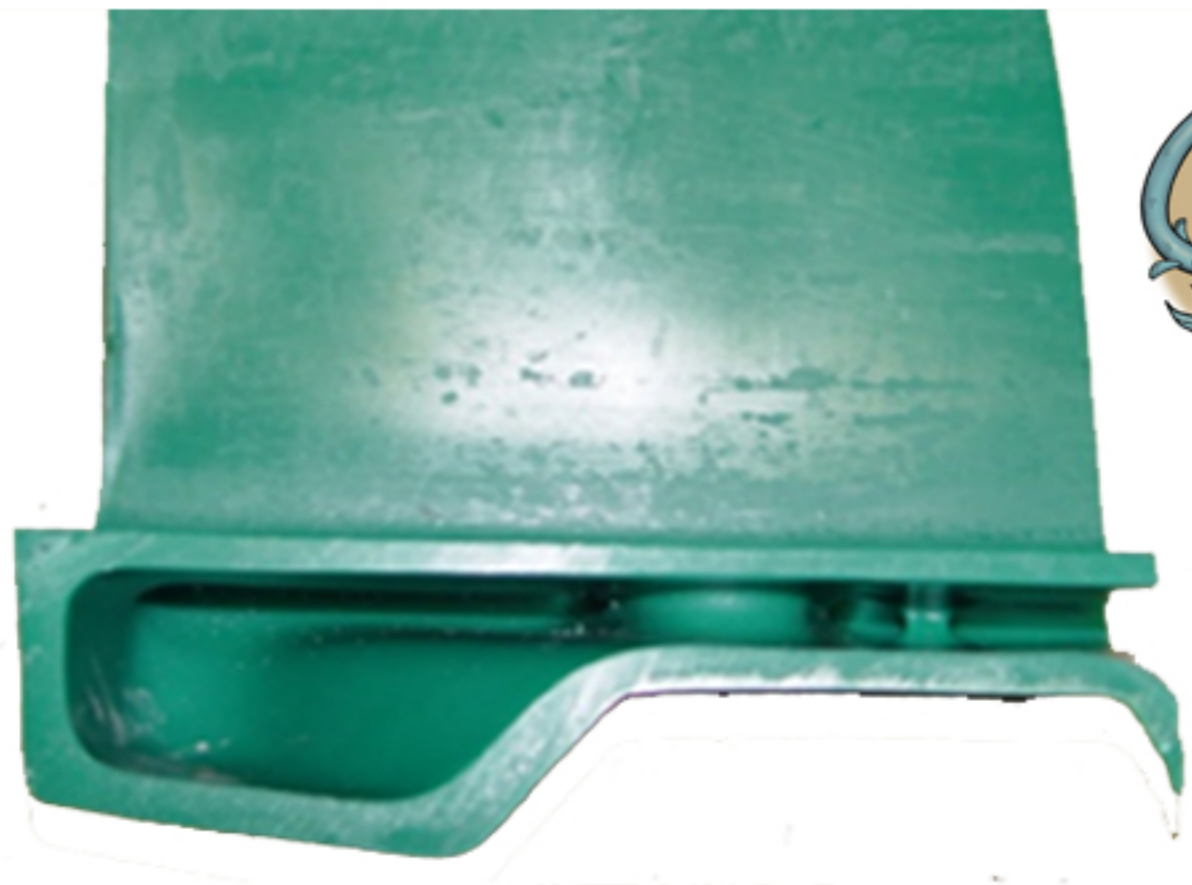




COMPETITOR COMPARISON: DUMPSTERS

Company	Bin Weight	Assembled Weight	Truck Load Qty	Lid Type	Warranty Years	Ave Wall Thickness	Cubic Volume	Gallons	Steel Frame or Pockets	Plastic Sleeve or Pocket	Rear Wall	Below Pocket	Bottom Corner	Average
Bearicuda	285	360	30	Roto	5	0.386	4	815	no	yes	0.314	0.378	0.466	0.386
Toter	240 (188)	314	35/20	blow		0.278	3.2	650	yes	yes	0.287	0.336	0.309	0.311
DPI	225.5	303.5		Roto		0.311	3.3	662	no	yes	0.331	0.282	0.359	0.324
Rehrig	239	286.5	20	Blow	3	0.324	3.3	660	no	yes	0.238	0.203	0.305	0.249
Nedland	135	424		Roto	5	0.249	3.5	700	yes	no	0.217	0.322	0.295	0.278
Otto	214	433	20	Vac (IPL)	1	0.34	3	605	yes	no	0.281	0.328	0.412	0.34

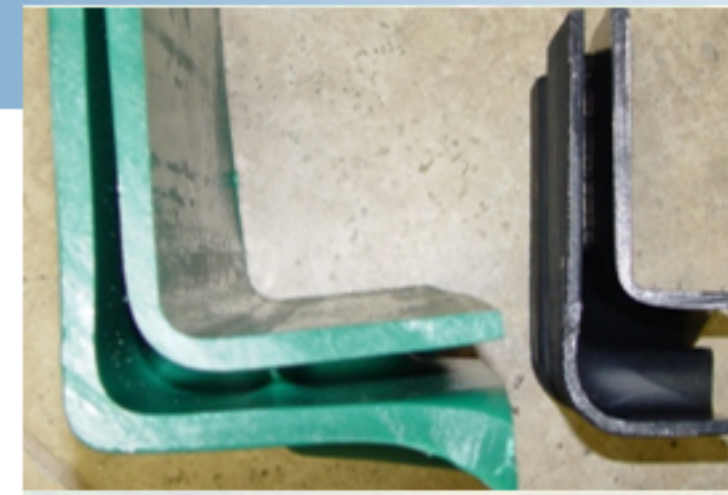
LIFTING POCKETS



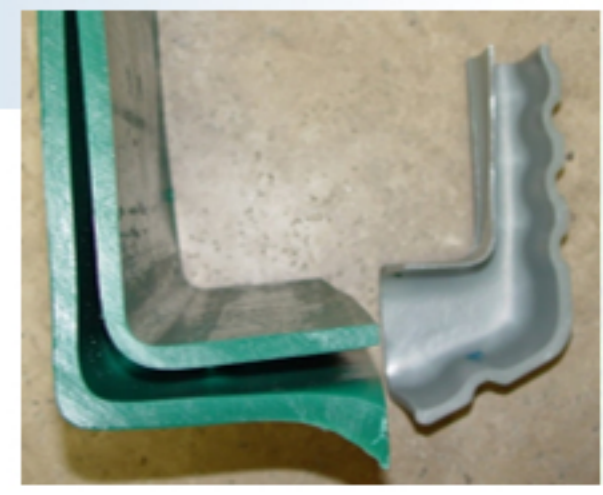
Bearicuda Lifting Pocket



Bearicuda vs Rehrig



Bearicuda vs Toter



Bearicuda vs DPI



Bearicuda vs Nedland



Bearicuda vs Otto

LID HINGE



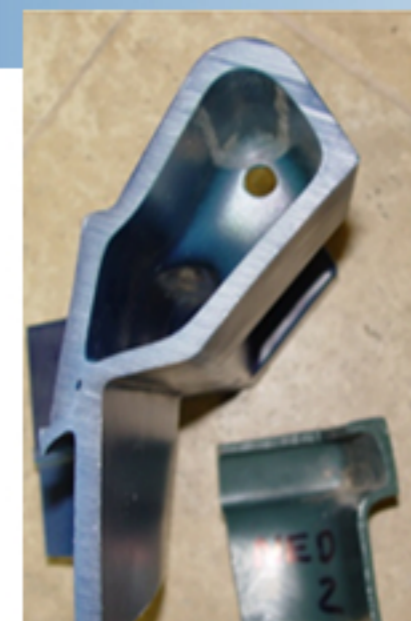
Bearicuda Lid Hinge



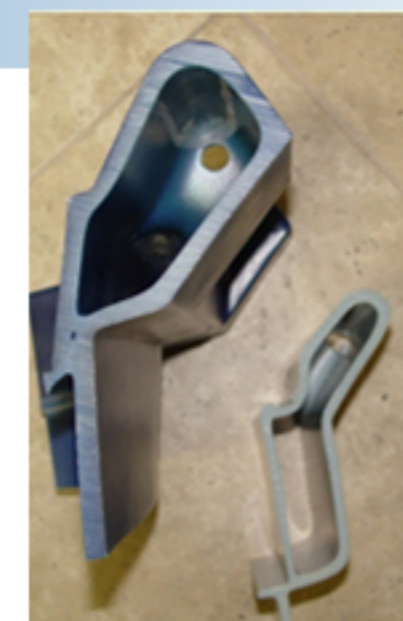
Bearicuda vs Rehrig



Bearicuda vs Toter



Bearicuda vs Nedland



Bearicuda vs DPI



Bearicuda vs Otto